

TRUCK FEATURES



STANDARD EQUIPMENT:

- Lithium Iron-phosphate battery
- Battery 80V 270Ah (21.6 kWh)
- AC drive
- 4-way valve
- Fork tilting
- Integrated side-shifter
- Finger-tip control
- TFT display
- Cornering speed reduction
- OPS (Operator Presence Sensor)
- Regenerative braking system
- Load wheel brake
- Charger 80V 100A
- 2 hour charging time

- Adjustable steering wheel
- Mast buffering system

OPTIONAL EQUIPMENT:

- 1 hour fast charging solution
- Charger 80V 200A
- Camera system
- Height pre-selection
- Fork weighing system
- Blue light
- Working lights on fork carriage
- Panoramic mirror
- Rear working light
- Orange seat belt with sensor



Li
Iron
Phosphate



REACH TRUCK RTR16

BYD REACH TRUCK (1600 kg)



- 80V AC technology
- Powered by Lithium Iron-Phosphate
- 8 years or 10,000 hours battery warranty
- One battery for multiple working shifts
- Lowest cost of ownership
- Finger-tip control system
- One-hour fast charging optional
- Fork tilt, lifting height up to 8.5m
- 180°steering
- Load wheel brake
- Wheel position indicator

**CHANGE YOUR MIND
NOT YOUR BATTERY**

RTR16 is the first reach truck offering from BYD and features state-of-art design with optimal driving comfort, safety and working efficiency.

BYD Reach Trucks are powered by our own Lithium Iron-Phosphate technology and feature the most up to date battery management systems. We also offer the longest battery-warranty in the industry, 8 years or 10,000 hours, whichever comes first.

Thanks to ultra-fast side charging with flexible battery and charger options, BYD Reach Trucks easily operate in multi-shift applications on a single battery, saving you both time and money.



BYD Forklift production site in Shaoguan, China, is certified. **ISO 9001**
ISO 14001
OHSAS 18001

BYD trucks conform to the European Safety Requirements **CE**

BYD Europe B.V.

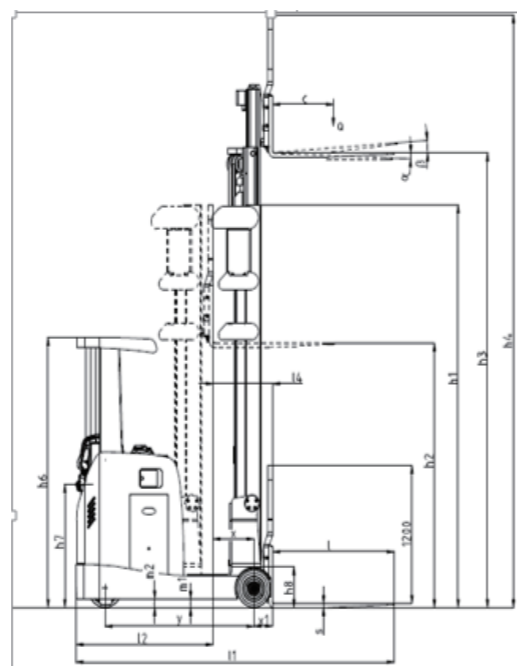
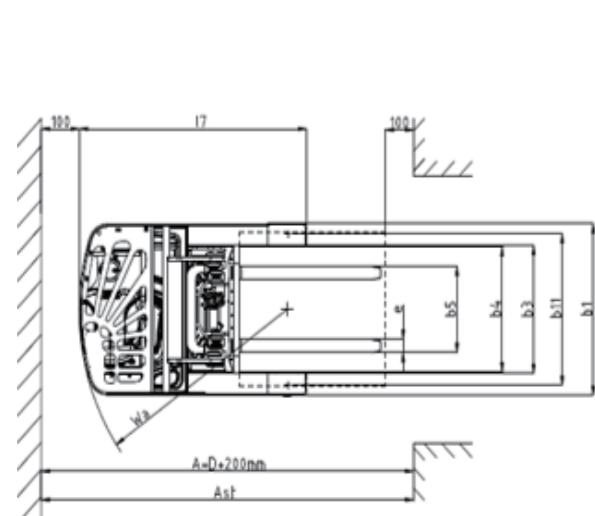
's-Gravelandseweg 256, 3125 BK Schiedam, The Netherlands
Tel: 0031 1020 70888 E-mail: forklift@byd.com
03-18/BPS/V1 www.bydforklift.com



MAST SPECIFICATIONS

- h3** Lifting Height (mm) **h2** Full Free Lift Height (mm) (Load Backrest 1000mm) **h1** Height, Mast Fully Lowered (mm)
- h4** Height, Mast Fully Extended (mm) (Load Backrest 1000mm) **α** Tilt Forward **β** Tilt Backward

Mast Specifications (mm)	h3	h2	h1	h4	α	β	Residual Capacity (kg)	
							LCD@600mm	
2-stage standard Mast	2700	35	1971	3946	2°	4°	1600	
	3000	35	2121	4246	2°	4°	1600	
	3500	35	2371	4746	2°	4°	1600	
	3800	35	2521	5046	2°	4°	1600	
	4000	35	2621	5246	2°	4°	1600	
	4500	35	2871	5746	2°	4°	1600	
	4800	35	3021	6046	2°	4°	1600	
	5000	35	3121	6246	2°	4°	1600	
	5300	35	3271	6546	2°	4°	1600	
3-Stage Full Free Lift Mast	4500	961	2161	5746	2°	4°	1600	
	4800	1061	2261	6046	2°	4°	1600	
	5100	1161	2361	6346	2°	4°	1600	
	5550	1311	2511	6796	2°	4°	1600	
	6000	1461	2661	7246	2°	4°	1600	
	6450	1611	2811	7696	2°	4°	1600	
	7650	2061	3261	8896	2°	4°	1450	
	8500	2296	3496	9746	2°	4°	1100	



RTR16 SPECIFICATIONS

Identification	1.1	Manufacturer				BYD
	1.2	Model				RTR16
	1.3	Drive				Electric
	1.4	Operator type				Seated
	1.5	Rated capacity	Q	kg		1600
	1.6	Load center	c	mm		600
	1.8	Load distance, center of drive axle to fork	x	mm		188/400
	1.9	Wheelbase	y	mm		1470

Weight	2.1	Net weight including battery		kg	4070	
	2.3	Alex loading, fork advanced, laden front/rear		kg	1909/2361	
	2.4	Alex loading, unladen front/rear		kg	1038/4832	
	2.5	Axle loading, fork retracted, laden front/rear		kg	2627/1643	
	Wheels, Chassis	3.1	Tyres			PU
3.2		Tyre size, front			Φ343×136	
3.3		Tyre size, rear			Φ340×100	
3.5		Wheels, number front/rear (× = driven wheels)			1x/2	
3.7		Tread width, rear	b11	mm	1170	
Basic Dimensions		4.1	Tilt of mast/fork carriage forward/backward	α/β	(°)	2/4
		4.2	Mast height (lowered)	h1	mm	3496
	4.3	Free lift	h2	mm	2250	
	4.4	Lift	h3	mm	8500	
	4.5	Extended mast height	h4	mm	9746	
	4.7	Height of overhead guard	h6	mm	2345	
	4.8	Seat height/standing height	h7	mm	1020	
	4.10	height of support arms	h8	mm	360	
	4.19	Overall length	l1	mm	2555	
	4.20	Length to face of forks	l2	mm	1355	
	4.21	Overall width	b1	mm	1270	
	4.22	Fork dimensions	s/e/l	mm	35/100/1200	
	4.23	Fork carriage ISO 2328, class/type A, B			2A	
	4.24	Fork carriage width	b3	mm	730	
	4.25	Width across forks	b5	mm	430/678	
	4.26	Width between support arms/loading areas	b4	mm	930	
	4.28	Reach distance	l4	mm	588	
	4.31	Ground clearance, under the mast	m1	mm	73	
	4.32	Ground clearance, center of wheelbase	m2	mm	80	
	4.33	Aisle width for pallets 1000 × 1200 crossways	Ast	mm	2848	
	4.34	Aisle width for pallets 800 × 1200 lengthways	Ast	mm	2904	
	4.35	Turning radius	Wa	mm	1758	
	4.37	Length across support arms	l7	mm	1930	
Performance Data	5.1	Travel speed, with/without load		Km/h	13/13	
	5.2	Lift speed, with/without load		mm/s	380/680	
	5.3	Lowering speed, with/without load		mm/s	550/550	
	5.4	Mast reaching speed, with/without load		mm/s	180/180	
	5.4a	Mast retracting speed, with/without load		mm/s	180/180	
	5.8	Max. gradeability, with/without load		%	12/12	
	5.9	Acceleration time, with/without load (0-10m)		s	5.6/5.0	
	5.10	Service brake			Hydraulic/Mechanic	
	Motor	6.1	Drive motor rating S2 60 min.		kW	6.8/13.2
		6.2	Lift motor rating at S3 15%		kW	12/19
6.4		Battery voltage, nominal capacity K5		V/Ah	80/270	
6.5		Battery weight		kg	425	
Others		8.1	Type of drive control			AC
	8.2	Operating pressure for attachments		bar	210	
	8.4	Sound level at the driver's ear		dB(A)	≤75	

*BYD reserves the right to alter and modify the design, features and technical parameters of its products at any given time and without pre-advise, as products are subject to ongoing and continuous development.